

# Wide 4.3" Color GPS/Combo/Fishfinder

Compact and a simple-to-use menu structure satisfies your sail !



 **SAMYUNG ENC Co.,Ltd.**

Distributed By: Falcon Tera Axis, info@falcontera.com  
+2348077139505, +2347045228566.

*It will bring all mariners to a distinctive level of experincing at sea !!*

**Wide 4.3" High resolution TFT LCD !!**

**Function by using icon for menu !!**



- Save a chart image on internal memory (128M)
- Save internal data on SD card
- View and print saved data on SD card



- Adjustable bracket can be attached or detached easily

## Wide 4.3" Color GPS/Combo/Fishfinder

## N430/NF430/F430

### ◆ Features

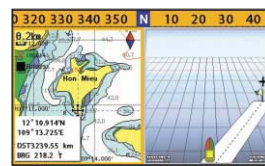
- Wide 4.3" High resolution TFT LCD
- Fast screen response by high performance CPU
- 10 steps adjustable LED backlight
- Multiple languages available including English, Chinese, Russian, Thai, Malay etc.
- 128MB internal memory and built-in standard Samyung chart
- DGPS(WAAS, MSAS, EGNOS)
- User-friendly operation type by using icon for each menu
- NMEA 0183 interface (AIS, NAVTEX, DSC etc.)
- 2 split screens (Chart, Data, Highway etc.)
- Suitable for small fishing boat
- Using single frequency (200Khz) for detection of small and individual fish
- Easy to use by auto gain

**Experience!**  
**The best quality with reasonable price.**



Spec.	Model	N430	NF430	F430
Size		127.5 mm(H) x 183 mm(W) x 91.5 mm(D)		
Display		Wide 4.3", TFT color, 480 x 272 pixels		
Supply voltage		10 to 36 V DC		
Supply current		13.8 V, 0.13A min-no backlighting. 0.24A max-full backlighting.		
Operating temp.		-10°C ~ 50°C		
Alarms		Arrival radius, anchor, XTE, danger, too shallow, too deep, fish, temperature, temperature rate, low battery, low fuel(optional), loss of DGPS fix, radar guard zone, dangerous AIS vessels.		
Chart/User card		NAVIONICS® GOLD / SD Card		-
Waypoints		10,000 waypoints (Event Mark : 48, Mark Color : 16)		-
Routes		100 Routes, with up to 100 points each		-
Tracks		By time or distance, 10 track of 15,000 points		-
Chart datums		216 Chart datums (see next page)		-
Chart scale		0.2 ~ 500 nm		-
Interface		NMEA 0183		-
Frequency		-	200KHz	
Output		-	300W	
Depth Range		-	Min : 0m~3m, Max : 0m~300m	
Color Display		-	16 colors	
Brightness		-	10-step	
Screen Moving Speed		-	super fast, fast, medium, low, stop	
Battery Voltage Display		-	Voltage number display	
AUTO GAIN Adjustment		-	OFF/ON	
A-Mode Display		-	OFF/ON	
Demo Display		-	OFF/ON	
Weak Color Removal		-	0%~75%	

\* Specification is subject to change without notice

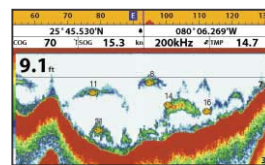


- AIS information on chart plotter by connecting to compatible AIS receiver (NMEA0183)
- Two split screen presentation available
- Display multiple functions on split screen



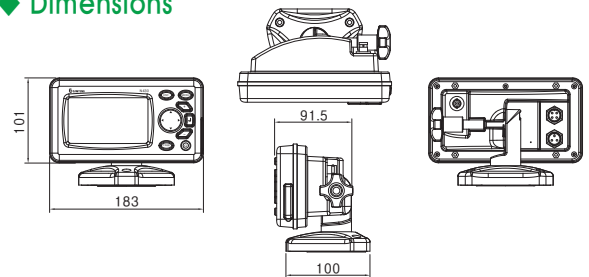
- Choose a page / function by using icon for menu

• Various icons



- High output power 200W built-in RMS enable to distinguish a seabed up to 300m
- Single frequency(200kHz) transducer
- Zoom, Bottom lock, Full screen zoom, Bottom, 200KHz, A-Scope

### ◆ Dimensions



### ◆ Component

- Main unit
- GPS Antenna(N430/NF430)
- Transducer(NF430/F430)
- Installation materials, Spare parts, Manual

1Unit  
 1Unit  
 1Unit  
 1Set

### ◆ Option

- Power Supply • SD Card